



# D4

## Track-Type Tractor

# Technical Specifications

Configurations and features may vary by region. Please consult your Cat® dealer for availability in your area.

### Table of Contents

<b>Specifications</b> .....	<b>2</b>
Build Number .....	2
Engine .....	2
Transmission – Travel Speed .....	2
Service Refill Capacities .....	2
Drawbar Pull .....	2
D4 .....	3
Blades .....	3
D4 LGP .....	4
Blades .....	4
Track Shoes .....	5
Precision Cutting Edges .....	5
Heavy Duty/Forestry Dozer .....	5
Ripper .....	6
Winch .....	6
Standards .....	7
Sound and Vibration Levels .....	7
Test Method .....	7
Air Conditioning System .....	7
Dozer Technology Features .....	8
<b>Standard and Optional Equipment</b> .....	<b>9</b>
<b>D4 Environmental Declaration</b> .....	<b>12</b>

# D4 Track-Type Tractor Specifications

## Build Number

Build Number 16B

## Engine

Engine Model Cat® C4.4 with twin turbo

Emissions U.S. EPA Tier 4 Final/  
EU Stage V/Japan 2014/  
Korea Stage V

Net Power (2,100 rpm)

SAE J1349/ISO 9249 97 kW 130 hp

ISO 9249 (DIN) 132 mhp

Engine Power – Maximum (2,200 rpm)

SAE J1995 119 kW 160 hp

ISO 14396 117 kW 157 hp

ISO 14396 (DIN) 159 mhp

Bore 105 mm 4.13 in

Stroke 127 mm 4.99 in

Displacement 4.4 L 268.5 in<sup>3</sup>

- Net power available at the flywheel when the engine is equipped with fan, air cleaner, aftertreatment, and alternator with engine speed at 2,100 rpm.
- Advertised power is tested per the specified standard in effect at the time of manufacture.
- No derating required up to 3000 m (9,840 ft) altitude, beyond 3000 m (9,840 ft) automatic derating occurs.
- Cat diesel engines are required to use ULSD (ultra-low sulfur diesel fuel with 15 ppm of sulfur or less) or ULSD blended with the following lower-carbon intensity fuels\*\* up to:
  - ✓ 20% biodiesel FAME (fatty acid methyl ester)\*
  - ✓ 100% renewable diesel, HVO (hydrotreated vegetable oil) and GTL (gas-to-liquid) fuels

Refer to guidelines for successful application. Please consult your Cat dealer or “Caterpillar Machine Fluids Recommendations” (SEBU6250) for details.

*\*Engines with no aftertreatment devices can use higher blends, up to 100% biodiesel (for use of blends higher than 20% biodiesel, consult your Cat dealer).*

*\*\*Lower-carbon intensity fuels do not significantly reduce GHGs at the tailpipe.*

## Transmission – Travel Speed

Transmission Type Hydrostatic

Forward 0-10 km/h 0-6.2 mph

Reverse 0-10 km/h 0-6.2 mph

## Service Refill Capacities

Fuel Tank 260 L 69 gal

Diesel Exhaust Fluid (DEF) Tank 19 L 5 gal

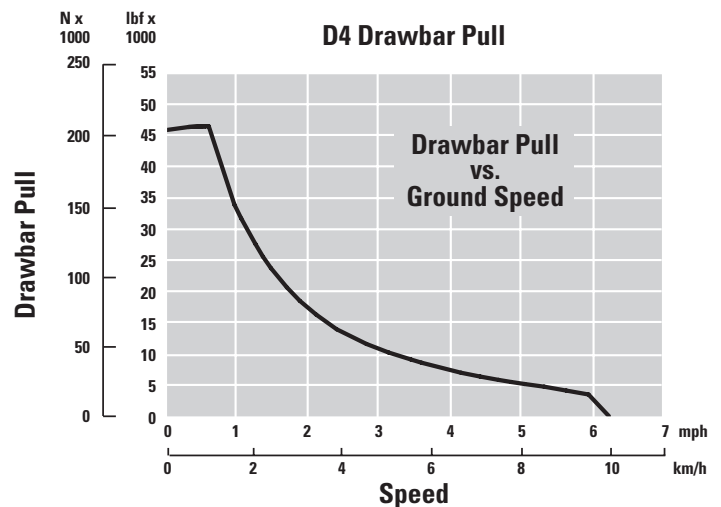
Cooling System 24 L 6.3 gal

Engine Crankcase 11 L 2.9 gal

Final Drives (each) 18.5 L 4.9 gal

Hydraulic Tank 64 L 16.9 gal

## Drawbar Pull



# D4 Track-Type Tractor Specifications

## D4

Operating Weight*	13 272 kg	29,259 lb
Shipping Weight**	13 006 kg	28,673 lb
Ground Pressure (ISO 16754)	40.5 kPa	5.9 psi
Undercarriage (Standard)	40 Section/ 8 Bottom Rollers	
<b>1</b> Track Gauge	1770 mm	70 in
<b>2</b> Width of Track Shoe (Standard)	560 mm	22 in
<b>3</b> Width of Tractor	2330 mm	92 in
<b>4</b> Length of Track on Ground	2653 mm	1,104 in
Ground Contact Area (ISO 16754)	3.27 m <sup>2</sup>	5,070 in <sup>2</sup>
Grouser Height (Moderate/Extreme Service)	48/57 mm	1.9/2.2 in
Ground Clearance	350 mm	14.0 in
<b>5</b> Machine Height***	2965 mm	117 in
<b>6</b> Length of Basic Tractor****	4731 mm	181 in

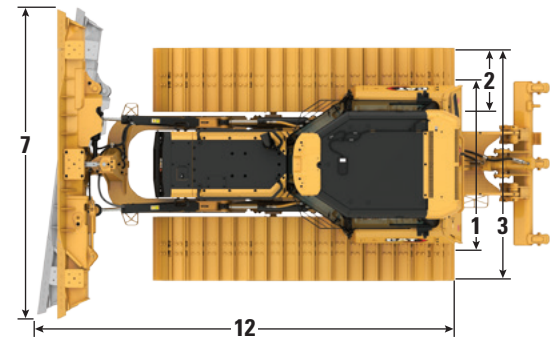
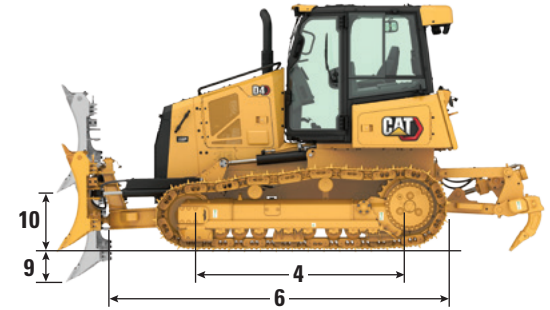
All dimensions above with Cat Abrasion™ undercarriage with Extreme Service shoes of maximum width for configuration, VPAT blade, and calculated per ISO 16754 unless otherwise specified.

\*Operating weights: includes EROPS, A/C, lights, VPAT Dozer, VPAT blade, transmission, drawbar, engine enclosure, 3-valve hydraulics, 100% fuel, Cat Comfort Series air suspension seat and operator.

\*\*Shipping weight includes EROPS, A/C, lights, VPAT Dozer, VPAT blade, transmission, drawbar, engine enclosure, 3-valve hydraulics, 10% fuel, Cat Comfort Series air suspension seat.

\*\*\*Machine height from tip of grouser to top of ROPS cab.

\*\*\*\*Length of Basic Tractor from blade to drawbar.



LGP Model with Foldable VPAT Blade Shown

## Blades

Configuration	VPAT		Foldable VPAT	
Capacity (ISO 9246)	3.26 m <sup>3</sup>	4.26 yd <sup>3</sup>	3.26 m <sup>3</sup>	4.26 yd <sup>3</sup>
<b>7</b> Width across End Bits	3196 mm	10.5 ft	3196 mm	10.5 ft
Width without End Bits	3097 mm	10.2 ft	3097 mm	10.2 ft
Width across End Bits (Blade Angled 24°)	2920 mm	115 in	2920 mm	115 in
Width without End Bits (Blade Angled 24°)	2829 mm	111.4 in	2829 mm	111.4 in
Width of the Machine (Foldable Blade Angled 24° for transportation purpose only)	—		2371 mm	93.3 in
Maximum Blade Angle	24°		24°	
<b>8</b> Height	1291 mm	50.8 in	1291 mm	50.8 in
<b>9</b> Dig Depth	470 mm	18.5 in	470 mm	18.5 in
<b>10</b> Lift Height	953 mm	37.5 in	953 mm	37.5 in
<b>11</b> Maximum Tilt at Blade Corner	226 mm	8.9 in	226 mm	8.9 in
Maximum Tilt Angle	8°		8°	
Pitch Adjustment	60° (cutting edge/ground, nominal); -2°/+4°			
<b>12</b> Length of Machine (Blade Straight)	5142 mm	202.4 in	5142 mm	202.4 in
Length of Machine (Blade Angled 24°)	5738 mm	226.3 in	5738 mm	226.3 in
Blade Weight	1005 kg	2,215 lb	1195 kg	2,634.5 lb

# D4 Track-Type Tractor Specifications

## D4 LGP

Operating Weight*	14 008 kg	30,882 lb
Shipping Weight**	13 742 kg	30,296 lb
Ground Pressure (ISO 16754)	31 kPa	4.5 psi
Undercarriage (Standard)	40 Section/ 8 Bottom Rollers	
<b>1</b> Track Gauge	2000 mm	79 in
<b>2</b> Width of Track Shoe (Standard)	760 mm	30 in
<b>3</b> Width of Tractor	2760 mm	109 in
<b>4</b> Length of Track on Ground	2653 mm	104 in
Ground Contact Area (ISO 16754)	4.46 m <sup>2</sup>	6,912 in <sup>2</sup>
Grouser Height (Moderate/Extreme Service)	48/57 mm	1.9/2.2 in
Ground Clearance	350 mm	14.0 in
<b>5</b> Machine Height***	2965 mm	117 in
<b>6</b> Length of Basic Tractor****	4731 mm	181 in

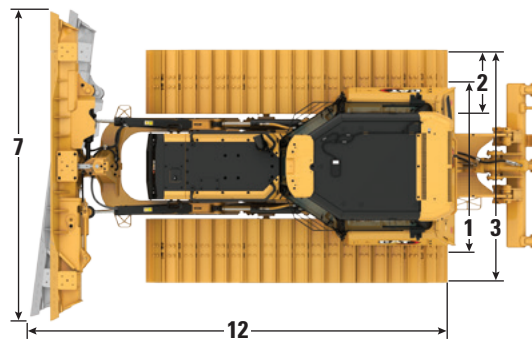
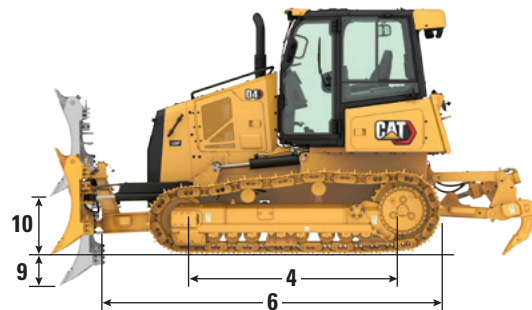
All dimensions above with Cat Abrasion undercarriage with Extreme Service shoes of maximum width for configuration, VPAT blade, and calculated per ISO 16754 unless otherwise specified.

\*Operating weights: includes EROPS, A/C, lights, VPAT Dozer, VPAT blade, transmission, drawbar, engine enclosure, 3-valve hydraulics, 100% fuel, Cat Comfort Series air suspension seat and operator.

\*\*Shipping weight includes EROPS, A/C, lights, VPAT Dozer, VPAT blade, transmission, drawbar, engine enclosure, 3-valve hydraulics, 10% fuel, Cat Comfort Series air suspension seat.

\*\*\*Machine height from tip of grouser to top of ROPS cab.

\*\*\*\*Length of Basic Tractor from blade to drawbar.



Foldable VPAT Blade Shown

## Blades

Configuration	LGP VPAT		Foldable LGP VPAT	
Capacity (ISO 9246)	3.81 m <sup>3</sup>	4.98 yd <sup>3</sup>	3.81 m <sup>3</sup>	4.98 yd <sup>3</sup>
<b>7</b> Width across End Bits	3684 mm	12.0 ft	3684 mm	12.0 ft
Width without End Bits	3573 mm	11.7 ft	3573 mm	11.7 ft
Width across End Bits (Blade Angled 24°)	3366 mm	132.5 in	3366 mm	132.5 in
Width without End Bits (Blade Angled 24°)	3264 mm	128.5 in	3264 mm	128.5 in
Width of the Machine (Foldable Blade Angled 24° for transportation purpose only)	—		2815 mm	110.8 in
Maximum Blade Angle	24°		24°	
<b>8</b> Height	1323 mm	52.1 in	1323 mm	52.1 in
<b>9</b> Dig Depth	470 mm	18.5 in	470 mm	18.5 in
<b>10</b> Lift Height	953 mm	37.5 in	953 mm	37.5 in
<b>11</b> Maximum Tilt at Blade Corner	260 mm	10.2 in	260 mm	10.2 in
Maximum Tilt Angle	8°		8°	
Pitch Adjustment	60° (cutting edge/ground, nominal); -2°/+4°			
<b>12</b> Length of Machine (Blade Straight)	5142 mm	202.5 in	5142 mm	202.5 in
Length of Machine (Blade Angled 24°)	5837 mm	229.8 in	5837 mm	229.8 in
Blade Weight	1105 kg	2,436 lb	1306 kg	2,879 in

# D4 Track-Type Tractor Specifications

## Track Shoes

Some track shoes not available in all regions. Please consult your Cat dealer for details.

Standard		
510 mm (20 in)	Cat Abrasion™	Moderate Service
510 mm (20 in)	Cat Abrasion	Extreme Service
560 mm (22 in)	Cat Abrasion	Moderate Service
560 mm (22 in)	Cat Abrasion	Extreme Service
510 mm (20 in)	Heavy Duty	Extreme Service
560 mm (22 in)	Heavy Duty	Extreme Service
LGP		
760 mm (30 in)	Cat Abrasion	Moderate Service
760 mm (30 in)	Cat Abrasion	Extreme Service
760 mm (30 in)	Cat Abrasion XL	Extended Life/Extreme Abrasion
760 mm (30 in)	Heavy Duty	Extreme Service
760 mm (30 in)	Heavy Duty	Self-Cleaning

## Precision Cutting Edges

Protect your blade investment with 20% more wear material and lower cost per hour, plus 40% more wear material on extended wear life edges.\* Cat Precision Cutting Edges are the only ones with wear indicators rolled right into the edge material, to ensure you know when to flip your cutting edges to avoid costly blade repairs.

\*Compared to legacy cutting edges  
(Available early 2024)

## Heavy Duty/Forestry Dozer

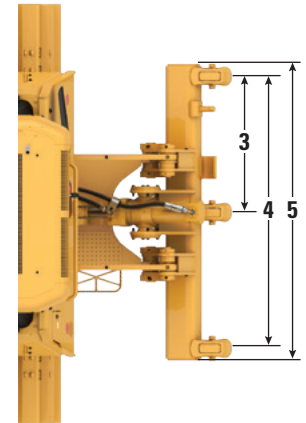
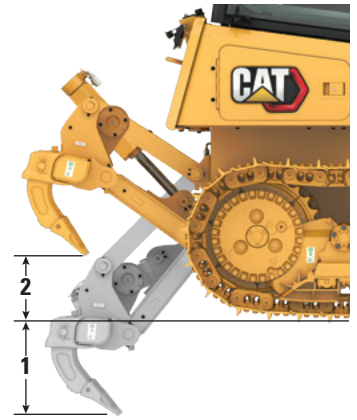
You can outfit your D4 with a variety of factory options designed to provide added protection in heavy-duty applications like forestry and land clearing. Please consult with your Cat dealer about the variety of options available to best equip your dozer for the work that you do:

- Heavy duty cab with polycarbonate windows
- Cab protection package with sweeps and rear screen
- Heavy Duty cab protection package with sweeps, rear screen, side screen, rear light guards
- Rear screen
- Heavy duty front protection package with heavy duty radiator grill and standard crankcase guard
- Heavy duty protection package with heavy duty radiator grill, heavy duty fuel tank guard, heavy duty crankcase guard (also available for fast fill/fast fill ready models)
- Heavy duty undercarriage
- Extreme service track shoes with Heavy duty undercarriage
- Track guiding guards
- Six or eight LED lights

# D4 Track-Type Tractor Specifications

## Ripper

Type	Fixed Parallelogram	
<b>1</b> Maximum Penetration	360 mm	14.2 in
<b>2</b> Maximum Clearance, Raised (Shank Tip)	488 mm	19.2 in
<b>3</b> Pocket Spacing	896 mm	35.3 in
<b>4</b> Shank Gauge	1792 mm	70.6 in
Shank Section	58.5 mm × 138 mm	2.3 in × 5.4 in
Number of Pockets	3	
<b>5</b> Overall Beam Width	1951 mm	76.8 in
Beam Cross Section	165 mm × 211 mm	6.5 in × 8.3 in
Weight with One Shank	845 kg	1,863 lb
Each Additional Shank	34 kg	75 lb
Maximum Penetration Force		
D4	42.2 kN	9,480 lb
D4 LGP	45.1 kN	10,138 lb
Maximum Pry-out Force		
D4	166.7 kN	37,480 lb
D4 LGP	166.7 kN	37,480 lb



## Winch

Winch Model	PA50	
Winch Drive	Hydrostatic	
Weight*	907 kg	2,000 lb
Winch and Bracket Length	845 mm	33.2 in
Winch Case Width	740 mm	29.1 in
Drum Diameter	205 mm	8 in
Drum Width	274 mm	11 in
Flange Diameter	457 mm	18 in
Drum Capacity (recommended rope)	93 m	306 ft
Drum Capacity (optional rope)	67 m	220 ft
Rope Recommended Diameter	19 mm	0.75 in
Optional Cable Size	22 mm	0.87 in
Cable Ferrule Size (O.D.)	54 mm	2.13 in
Cable Ferrule Size (length)	67 mm	2.63 in
Maximum Bare Drum		
Line Pull	222.4 kN	50,000 lbf
Line Speed	38 m/min	124 ft/min
Maximum Full Drum		
Line Pull	115.7 kN	26,000 lbf
Line Speed	70 m/min	230 ft/min

\*Weight includes pump, operator controls, oil, mounting brackets and spacers.

## Standards

### ROPS/FOPS/OPS

- ROPS (Rollover Protective Structure) offered by Caterpillar for the machine meets ROPS criteria ISO 3471:2008.
- FOPS (Falling Object Protective Structure) meets ISO 3449:2005 Level II.
- OPS (Operator Protective Structure) screens meets OPS criteria per ISO 8084:2003 and WCB G604:2011.

### Brakes

- Brakes meet the standard ISO 10265:2008.

### Sound Level Information

Hearing protection may be needed when the machine is operated with an open operator station, in a noisy environment, with a cab that is not properly maintained, or when the doors and windows are open for extended periods of time.

Sound Level		Test Method
Operator Sound Pressure Level	78 dB(A)	“ISO 6396:2008” <sup>(1)</sup>
Exterior Sound Power Level	109 dB(A)	“ISO 6395:2008” <sup>(2)</sup>

<sup>(1)</sup>The measurement was conducted at 70% of the maximum engine cooling fan speed. The sound level may vary at different engine cooling fan speeds. The measurement was conducted with the cab doors and the cab windows closed. The cab was properly installed and maintained.

<sup>(2)</sup>The measurement was conducted at 70% of the maximum engine cooling fan speed. The sound level may vary at different engine cooling fan speeds.

The sound levels listed above include both measurement uncertainty and uncertainty due to production variation.

### Vibration Levels

Maximum Hand/Arm*	
ISO 5349:2001	2.5 m/s <sup>2</sup>
Maximum Whole Body*	
ISO/TR25398:2006	0.5 m/s <sup>2</sup>
Seat Transmissibility Factor	
ISO 7096:2000 – spectral class EM6	<0.7

\*Values are for an experienced operator in a dozing application, consult the Operating and Maintenance Manual for further details.

## Air Conditioning System

The air conditioning system on this machine contains the fluorinated greenhouse gas refrigerant R134a (Global Warming Potential = 1430). The system contains 1.6 kg of refrigerant which has a CO<sub>2</sub> equivalent of 2.288 metric tons.



# D4 Track-Type Tractor Specifications

## Dozer Technology Features

Standard Assist technology features to help operators of varied experience levels get the job done faster and more accurately. Grade offerings help further enhance your productivity, efficiency and job site safety.

The cab is Third Party Grade Control Ready, equipped with CAN interface, harness pass throughs and mounting features to make it easier to install the grade control system of your choice.

### ARO with Assist Package (Standard)

Attachment Ready Option (ARO)	ARO provides wiring and mounting provisions for dealer installation of Grade with 3D, AccuGrade, UTS, or other grade control systems.
Cat Grade with Slope Assist™	Slope Assist automatically maintains pre-established blade position without a GNSS/GPS signal – no additional hardware or software needed. For machines with 3D, operators can easily switch back and forth from full 3D automatics to Slope Assist.
Steer Assist*	Steer Assist automates track and blade tilt steering. Helps reduce operator fatigue by automatically maintaining straight travel with light loads or heavy loads on flat ground and cross slopes. No GNSS/GPS required.
Stable Blade	Stable Blade works seamlessly with operator inputs to help produce a smoother surface when operating manually.
Slope Indicate	Slope Indicate is included in the main machine display and shows side slope and uphill/downhill grades to help operators with slope work.
Blade Load Monitor	Blade Load Monitor gives you real-time feedback on current load versus the optimal blade load based on your ground conditions. Actively monitors machine load and track slip to help you reach optimal pushing capacity. <sup>1</sup>
Traction Control	Traction Control automatically reduces track slip to save you time, fuel and track wear. <sup>1</sup>
AutoCarry™	AutoCarry automates blade lift to help you maintain consistent blade load and help reduce track slip. <sup>1</sup>

### Grade 3D with Assist Package (Optional)

**Includes all features from the ARO with Assist Package listed above, plus:**

Cat Grade with 3D	Factory integrated Cat Grade with 3D uses GNSS/GPS to control the blade so you can get to design plan faster. Low profile antennas are integrated into the cab roof and GNSS/GPS receivers are mounted inside the cab for better protection. <sup>2</sup>
Steer Assist 3D*	Automatically follow guidance lines from site design plans (or Infield designs) under light load or heavy load. <sup>2</sup>
Dedicated Touchscreen Grade Display	Full-color Grade operator interface is intuitive and easier to use. The 254 mm (10 in) touchscreen uses an Android OS platform and operates like a smart phone.

<sup>1</sup>Feature not operational indoors or in areas where a GNSS/GPS signal is not available.

<sup>2</sup>Requires Software Enabled Attachment (SEA) installation when not configured from the factory.

\*Steer Assist/Steer Assist 3D available early 2024.



## Standard and Optional Equipment

Standard and optional equipment may vary. Consult your Cat dealer for details.

	Standard	Optional		Standard	Optional
<b>POWER TRAIN</b>			<b>OPERATOR ENVIRONMENT</b>		
Cat® C4.4 diesel engine	✓		Cab – Standard ROPS/FOPS (air suspended seat, joystick controls)	✓	
U.S. EPA Tier 4 Final/EU Stage V/ Japan 2014/Korea Stage V Certified Engine with Aftertreatment	✓		Cab – Comfort Package (heated joystick controls, heated and ventilated seat)		✓
ADEM A6 Electronic Control Module	✓		Cab – Heavy Duty Package (polycarbonate windows, air suspended seat, joystick controls)		✓
Air-to-air aftercooling	✓		Cloth air suspension seat	✓	
Glow plug starting aid	✓		Heated/ventilated seat		✓
3000 m (9,840 ft) altitude operation capability without derating	✓		10-inch (254 mm) touchscreen display	✓	
Hydraulically driven, variable speed fan	✓		Rear view camera	✓	
Auto-reversing fan		✓	Electro-hydraulic implement and steering controls	✓	
Aluminum bar plate cooling system (radiator, power train, aftercooler)	✓		Electronically programmable speed selector	✓	
Air cleaner with integrated precleaner, dust ejector and under hood air intake	✓		Adjustable armrests	✓	
Air cleaner with turbine precleaner		✓	Heated joystick controls		✓
Electrical lift/priming pump	✓		Retractable seat belt, 76 mm (3 in)	✓	
Engine decelerating function (rotary switch and pedal engine speed control)	✓		12V power port	✓	
Hydrostatic, infinite variable speed transmission	✓		12V radio ready (plug and play)	✓	
Selections and electronic control enhancements for the transmission/ engine system	✓		Radio – AM/FM/AUX/USB/Bluetooth		✓
Programmable/selectable bi-directional shifting	✓		Footrests for slope work	✓	
Engine Idle Shutdown	✓		Integrated air conditioning with automatic temperature control	✓	
Auto Engine Speed Control	✓		Electronic engine air cleaner service indicator	✓	
Emergency engine (fire suppression applications)*		✓	Electronic water-in-fuel switch	✓	
			Product Link ready GSM or Satellite	✓	
			Intermittent wiper	✓	
			Storage compartments	✓	
			Cup holder	✓	
			Coat hook	✓	
			Rear view mirror	✓	

\*Available in N. America only.

(continued on next page)

# D4 Standard and Optional Equipment

## Standard and Optional Equipment *(continued)*

Standard and optional equipment may vary. Consult your Cat dealer for details.

	Standard	Optional		Standard	Optional
<b>CAT TECHNOLOGY</b>			<b>UNDERCARRIAGE</b>		
Slope Indicate	✓		Heavy Duty Undercarriage	✓	
<b>ARO with Assist Package</b>	✓		Cat Abrasion Undercarriage	✓	
– ARO			Cat Abrasion Extended Life Undercarriage		✓
– Slope Assist			Center-tread, sprocketed idler with Cat Abrasion or standard idler with Heavy Duty	✓	
– Steer Assist**			Lifetime lubricated track rollers (8 + 2 carrier rollers) and idlers	✓	
– Stable Blade			Tracks: 40 sections – 560 mm (22 in) Heavy Duty Moderate Service (MS) for D4	✓	
– Blade Load Monitor			Tracks: 40 sections – 760 mm (30 in) Heavy Duty Moderate Service (MS) for D4 LGP	✓	
– Traction Control			Hydraulic track adjusters	✓	
– AutoCarry			Replaceable sprocket rim segments	✓	
<b>Grade 3D with Assist Package</b>		✓	Center track guiding guard		✓
– Full-color 10-inch (254 mm) touchscreen grade display			Center track guiding guard – Cat Abrasion Extended Life		✓
– Steer Assist 3D**			Full track guiding guard		✓
– Grade receivers and antennas			Front and rear track guiding guard		✓
– Grade Software Enabled Attachment (SEA)			LGP Waste Handling Final Drive Guards*		✓
– ARO with Assist package features			<b>BLADES</b>		
Compatibility with radios and base stations from Trimble, Topcon, and Leica	✓		VPAT blade	✓	
Capability to install 3D grade systems from Trimble, Topcon, and Leica	✓		Foldable VPAT blade		✓
Product Link, Cellular	✓		Manual blade pitch	✓	
Product Link – Dual Cellular/Satellite		✓	Powered blade pitch		✓
Remote Flash/Troubleshoot	✓		Blade Shake	✓	
Operator ID	✓		Precision Cutting Edges**	✓	
Machine Security – Passcode	✓		<b>HYDRAULICS</b>		
Machine Security – Bluetooth		✓	Three valve-hydraulics	✓	
			Load sensing hydraulics	✓	

\*Available in N. America only.

\*\*Available early 2024.

*(continued on next page)*

# D4 Standard and Optional Equipment

## Standard and Optional Equipment (continued)

Standard and optional equipment may vary. Consult your Cat dealer for details.

	Standard	Optional		Standard	Optional
<b>ELECTRICAL</b>			<b>ATTACHMENTS</b>		
Horn	✓		Front pull device	✓	
Back-up alarm	✓		Rigid drawbar	✓	
12V converter, 10A diagnostic connector	✓		Ripper ready package		✓
950 CCA class 31 batteries	✓		Ripper ready package, powerpitch		✓
Six halogen lights	✓		Winch ready package		✓
Six LED lights		✓	Dual (ripper and winch) ready package		✓
Eight LED lights, Premium		✓	Dual (ripper and winch) ready package, powerpitch		✓
105 Amp brush-type alternator (24 volt)	✓		Ripper package, curved		✓
24V electric starter	✓		Ripper package, straight		✓
Cold weather starter		✓	Winch preparation		✓
Cold weather package (120V)		✓	Drawbar	✓	
Cold weather package (240V)		✓	Counterweight, rear		✓
Heated, insulated breather		✓	Counterweight, rear slab		✓
<b>SERVICE AND MAINTENANCE</b>			<b>DEALER INSTALLED ATTACHMENTS</b>		
Fast fuel fill		✓	Hydraulic winch arrangement		✓
Shovel mounting bracket		✓	Fairlead, three rollers		✓
Fuel refilling pump		✓	Fourth roller conversion kit		✓
High speed oil change		✓	Winch step		✓
Antifreeze coolant (-37° C/-34.6° F)	✓		<b>GUARDING</b>		
Extended life coolant	✓		Standard protection package (bottom guard, fan guard)	✓	
Cat HYDO™ Advanced 10 hydraulic fluid	✓		Front protection package		✓
Bio hydraulic oil		✓	Heavy duty protection package		✓
Extended service intervals (1,000 hours* engine oil and filter, 1,000 hours power train)	✓		<b>CAB PROTECTION</b>		
Ecology drains (engine oil, engine coolant, hydraulic)	✓		Cab standard protection package (sweeps, rear screen)		✓
Scheduled Oil Sampling (S·O·S <sup>SM</sup> ) ports (engine, hydrostatic, hydraulics and engine coolant)	✓		Cab heavy duty protection package (sweeps, rear screen, side screens, rear light guards)		✓
Hinged radiator louvered grill	✓		Cab rear screen		✓
			<b>OTHER STANDARD EQUIPMENT</b>		
			C-Frame, cylinders and lines	✓	
			Crankcase guard	✓	
			Perforated engine enclosures	✓	
			Lockable engine enclosures	✓	

\*S·O·S sampling required. Please consult Operation and Maintenance Manual (OMM) for complete service information.

# D4 Environmental Declaration

The following information applies to the machine at the time of final manufacture as configured for sale in the regions covered in this document. The content of this declaration is valid as of the date issued; however, content related to machine features and specifications are subject to change without notice. For additional information, please see the machine's Operation and Maintenance Manual.

For more information on sustainability in action and our progress, please visit <https://www.caterpillar.com/en/company/sustainability>.

## Engine

- The Cat® C4.4 engine meets U.S. EPA Tier 4 Final and EU Stage V, Japan 2014, and Korea Stage V emission standards.
- Cat diesel engines are required to use ULSD (ultra-low sulfur diesel fuel with 15 ppm of sulfur or less) or ULSD blended with the following lower-carbon intensity fuels\*\* up to:
  - ✓ 20% biodiesel FAME (fatty acid methyl ester)\*
  - ✓ 100% renewable diesel, HVO (hydrotreated vegetable oil) and GTL (gas-to-liquid) fuels

Refer to guidelines for successful application. Please consult your Cat dealer or “Caterpillar Machine Fluids Recommendations” (SEBU6250) for details.

*\*Engines with no aftertreatment devices can use higher blends, up to 100% biodiesel (for use of blends higher than 20% biodiesel, consult your Cat dealer).*

*\*\*Lower-carbon intensity fuels do not significantly reduce GHGs at the tailpipe.*

## Air Conditioning System

- The air conditioning system on this machine contains the fluorinated greenhouse gas refrigerant R134a (Global Warming Potential = 1430). The system contains 1.6 kg (3.5 lb) of refrigerant which has a CO<sub>2</sub> equivalent of 2.288 metric tonnes (2.522 tons).

## Paint

- Based on best available knowledge, the maximum allowable concentration, measured in parts per million (PPM), of the following heavy metals in paint are:
  - Barium < 0.01%
  - Cadmium < 0.01%
  - Chromium < 0.01%
  - Lead < 0.01%

## Sound Performance

With cooling fan speed at 70% of the maximum value:

Guaranteed Exterior Sound Power Level  
(2000/14/EC ISO 6395:2008) – 109 dB(A)

Dynamic Operator Sound Pressure Level  
(ISO 6396:2008) – 76 dB(A)

- Hearing protection may be needed when operating with an open operator station and cab (when not properly maintained or doors/windows open) for extended periods or in a noisy environment.

## Oils and Fluids

- Caterpillar factory fills with ethylene glycol coolants. Cat Diesel Engine Antifreeze/Coolant (DEAC) and Cat Extended Life Coolant (ELC) can be recycled. Consult your Cat dealer for more information.
- Cat Bio HYDO™ Advanced is an EU Ecolabel approved biodegradable hydraulic oil.
- Additional fluids are likely to be present, please consult the Operations and Maintenance Manual or the Application and Installation guide for complete fluid recommendations and maintenance intervals.

## Features and Technology

- The following features and technology may contribute to fuel savings and/or carbon reduction. Features may vary. Consult your Cat dealer for details.
  - Eco mode minimizes fuel consumption for light applications
  - Save fuel with efficiency features such as engine idle shutdown
  - Extended maintenance intervals reduce fluid and filter consumption
  - Cut maintenance costs with extended maintenance intervals
  - Boost productivity up to 50% with Cat Assist and Grade technologies.
  - Remote Flash and Remote Troubleshoot

## Recycling

- The materials included in machines are categorized as below with approximate weight percentage. Because of variations of product configurations, the following values in the table may vary.

Material Type	Weight Percentage
Steel	78.02%
Iron	7.86%
Other	4.00%
Nonferrous Metal	3.07%
Uncategorized	2.81%
Rubber	1.42%
Mixed Metal	1.37%
Fluid	0.74%
Plastic	0.68%
Mixed-Metal & Nonmetal	0.03%
Mixed Nonmetallic	0.02%
Total	100.00%

- A machine with higher recyclability rate will ensure more efficient usage of valuable natural resources and enhance End-of-Life value of the product. According to ISO 16714 (Earth-moving machinery – Recyclability and recoverability – Terminology and calculation method), recyclability rate is defined as percentage by mass (mass fraction in percent) of the new machine potentially able to be recycled, reused or both.

All parts in the bill of material are first evaluated by component type based on a list of components defined by the ISO 16714 and Japan CEMA (Construction Equipment Manufacturers Association) standards. Remaining parts are further evaluated for recyclability based on material type.

Because of variations of product configurations, the following value in the table may vary.

Recyclability – 93%



オフロード法2014年  
基準適合

For more complete information on Cat products, dealer services, and industry solutions, visit us on the web at [www.cat.com](http://www.cat.com)

© 2023 Caterpillar  
All rights reserved

Materials and specifications are subject to change without notice. Featured machines in photos may include additional equipment. See your Cat dealer for available options.

CAT, CATERPILLAR, LET'S DO THE WORK, their respective logos, "Caterpillar Corporate Yellow," the "Power Edge" and Cat "Modern Hex" trade dress as well as corporate and product identity used herein, are trademarks of Caterpillar and may not be used without permission.

Based on the Labor, Safety and Health Laws in Japan, employer of small construction equipment are required to provide specific training for all operators on machines with ship weight less than 3 metric ton. For machines greater than 3 metric ton, operator needs to obtain operator license certification from a Government approved registered training school.

AEXQ3213-03 (04-2023)  
Replaces AEXQ3213-02  
Build Number: 16B  
(Aus-NZ, Chile, Europe, Japan,  
N Am, S Korea, Turkey)

